

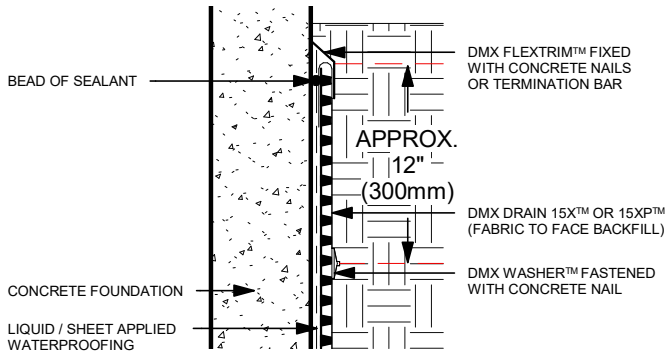
TRADITIONAL ASSEMBLY WITH DMX DRAIN 15X™ OR 15XP™

NOTES:

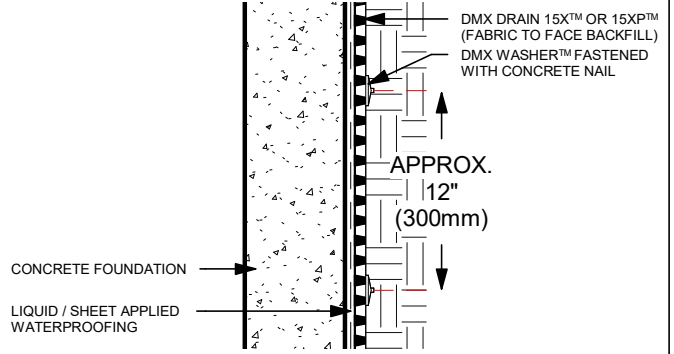
1. DRAWINGS THAT HAVE N.T.S IN BRACKETS ARE NOT TO SCALE.
2. N.T.S DRAWINGS ARE DESIGNED TO HIGHLIGHT THE LOCATION OF DMX DRAIN.
3. DETAILS ARE INTENDED TO BE A RECOMMENDED GUIDE FOR INSTALLATIONS.
4. ANY CONSTRUCTION / WORKING DRAWINGS PROVIDED FOR THE PROJECT SHOULD BE FOLLOWED AS DESIGNED.



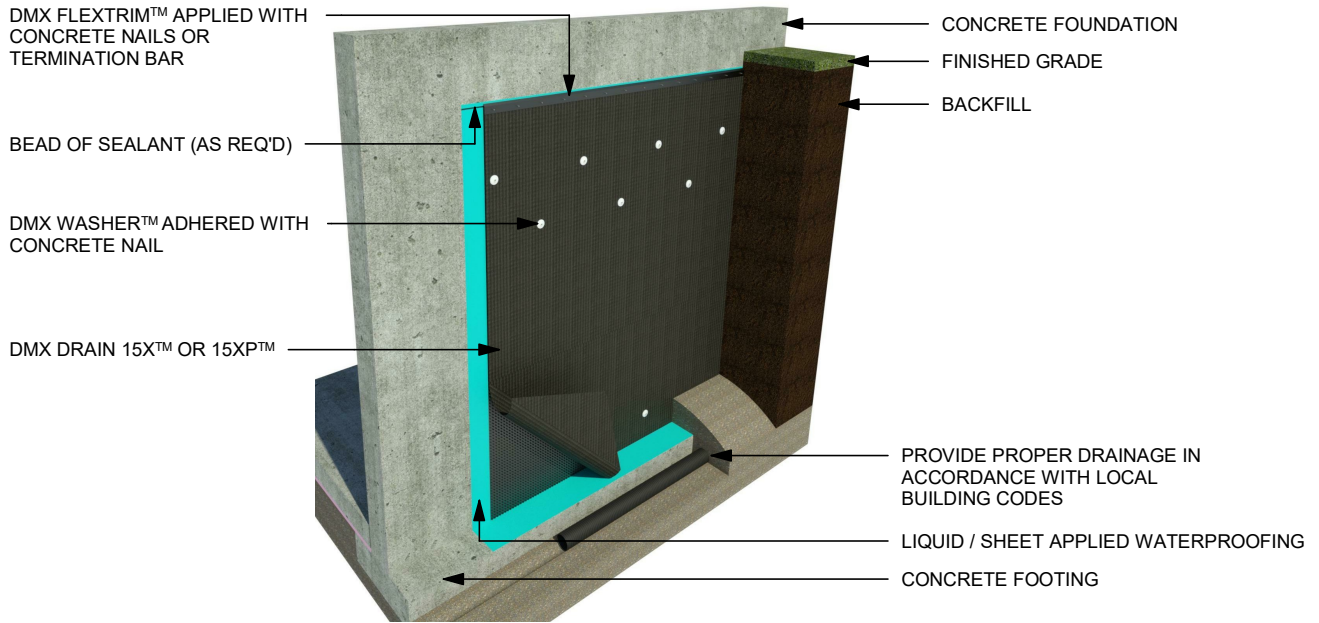
BETTER SCIENCE, BETTER PRODUCT



TRADITIONAL TERMINATION WITH DMX DRAIN 15X™ OR 15XP™ (SECTION VIEW - N.T.S)



TRADITIONAL ASSEMBLY WITH DMX DRAIN 15X™ OR 15XP™ (SECTION VIEW - N.T.S)



TRADITIONAL ASSEMBLY WITH DMX DRAIN 15X™ OR 15XP™ (ISO)



BETTER SCIENCE
BETTER PRODUCT

DMX Plastics Limited
165 Orenda Rd.
Brampton, On
L6W 1W3
905.458.8998

www.dmxmembranes.com

TRADITIONAL ASSEMBLY WITH DMX DRAIN 15X OR 15XP

Drawing number 15X.01

Date 09-01-2021

Drawn by BT

A301

Scale As indicated