



Ground Water Control For Deep Foundations



Toll free: 1-855-501-7837
www.dmxmembranes.com

DMX
PLASTICS LIMITED



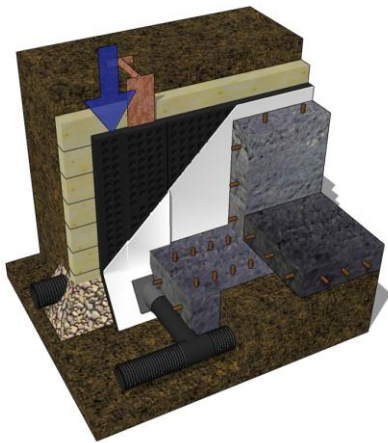
Ground Water Control For Deep Foundations

MATERIAL

DMX uses a specially formulated Polypropylene that provides a high environmental stress crack resistance to alkalines and acids found in the soil. In addition, DMX is made from 50% recycled resin. Our special extrusion process utilizes low heat and low shear to prevent heat degradation in the final product. The use of antioxidants and lubricants further ensure a smooth, superior quality membrane that outperforms the competition.

PROPERTIES

The DMX Drain drainage board finished product has a 10mm dimple height, providing a drainage capacity of 18 gal/min/ft of width and a compressive strength ranging from 11,000 -18,000lbs/sq ft. Polypropylene is highly resistant to chemical interaction and has a life expectancy of up to 50 years when properly installed in accordance with the manufacturer's instructions.



DRYFLEX BY F

Technical Data

DMX Drain 11X

DRAINAGE CORE	TEST METHOD	IMPERIAL	METRIC
Color	Black		
Dimensions (W x L)		4 x 50ft, 6 x 50ft	1.22 x 15.25m, 1.83 x 15.25m
Compressive Strength	ASTM D 1621	11000 psf	527 kNm ²
Thickness	ASTM D 1777	7/16 inch	10 mm
Material	Polypropylene		
FILTER FABRIC	NON-WOVEN		
Grab Tensile Strength	ASTM D 4632	90 lbs	0.401 kN
Grab Elongation	ASTM D 4632	50%	50%
Trapezoid Tear Strength	ASTM D 4533	40 lbs	0.178 kN
CBR Puncture Resistance	ASTM D 6241	265 lbs	1.178 kN
Permittivity	ASTM D 4491	2.0 sec ⁻¹	2.0 sec ⁻¹
Water Flow	ASTM D 4491	150 gpm/ft ²	6095 l/min/m ²
Apparent Opening Size (AOS)	ASTM D 4751	50 Std. U.S. Sieve	0.300 mm
UV Resistance	ASTM D 4355	70%/500 hrs	70%/500 hrs
COMPOSITE SYSTEM			
Water Flow Rate (V)	ASTM D 4716	18 Gal/min/ft	223 L/min/m
Roll Size		4ft x 50ft, 6ft x 50ft	1.22m x 15.25m, 1.83m x 15.25m
Roll Weight		28 lbs	12.7 kg

DMX Drain 15X

DRAINAGE CORE	TEST METHOD	IMPERIAL	METRIC
Color	Black		
Dimensions (W x L)		4 x 50ft, 6 x 50ft	1.22 x 15.25m, 1.83 x 15.25m
Compressive Strength	ASTM D 1621	15000 psf	718 kNm ²
Thickness	ASTM D 1777	7/16 inch	10 mm
Material	Polypropylene		
FILTER FABRIC	NON-WOVEN		
Grab Tensile Strength	ASTM D 4632	90 lbs	0.401 kN
Grab Elongation	ASTM D 4632	50%	50%
Trapezoid Tear Strength	ASTM D 4533	40 lbs	0.178 kN
CBR Puncture Resistance	ASTM D 6241	265 lbs	1.178 kN
Permittivity	ASTM D 4491	2.0 sec ⁻¹	2.0 sec ⁻¹
Water Flow	ASTM D 4491	150 gpm/ft ²	6095 l/min/m ²
Apparent Opening Size (AOS)	ASTM D 4751	50 Std. U.S. Sieve	0.300 mm
UV Resistance	ASTM D 4355	70%/500 hrs	70%/500 hrs
COMPOSITE SYSTEM			
Water Flow Rate (V)	ASTM D 4716	18 Gal/min/ft	223 L/min/m
Roll Size		4ft x 50ft, 6ft x 50ft	1.22m x 15.25m, 1.83m x 15.25m
Roll Weight		40 lbs, 55 lbs	18 kg, 25 kg

DMX Drain 18X

DRAINAGE CORE	TEST METHOD	IMPERIAL	METRIC
Color	Black		
Dimensions (W x L)		4 x 50ft, 6 x 50ft	1.22 x 15.25m, 1.83 x 15.25m
Compressive Strength	ASTM D 1621	18,000 psf	862 kNm ²
Thickness	ASTM D 1777	7/16 inch	10 mm
Material	Polypropylene		
FILTER FABRIC	WOVEN		
Grab Tensile	ASTM D 4632	365 x 200 lbs	1.62 x 0.89 kN
Grab Elongation	ASTM D 4632	15%	15%
Trapezoidal Tear	ASTM D 4533	115 x 75 lbs	0.51 x 0.33 kN
CBR Puncture Resistance	ASTM D 6241	675 lbs	3.0 kN
Water Flow	ASTM D 4491	145 gpm/sf	5907 l/min/sqm
Permittivity	ASTM D 4491	2.1 Sec ⁻¹	2.1 Sec ⁻¹
AOS	ASTM D 4751	40 US Sieve	0.425 mm
UV Resistance	ASTM D 4355	90/500 %/hrs	90/500 %/hrs
COMPOSITE SYSTEM			
Water Flow Rate (V)	ASTM D 4716	18 Gal/min/ft	223 L/min/m
Roll Size		4ft x 50ft, 6ft x 50ft	1.22m x 15.25m, 1.83m x 15.25m
Roll Weight		46 lbs, 70 lbs	21 kg, 32 kg



165 Orenda Road, Brampton, Ontario L6W 1W3

Toll Free: 1-855-501-7837
www.dmxmembranes.com